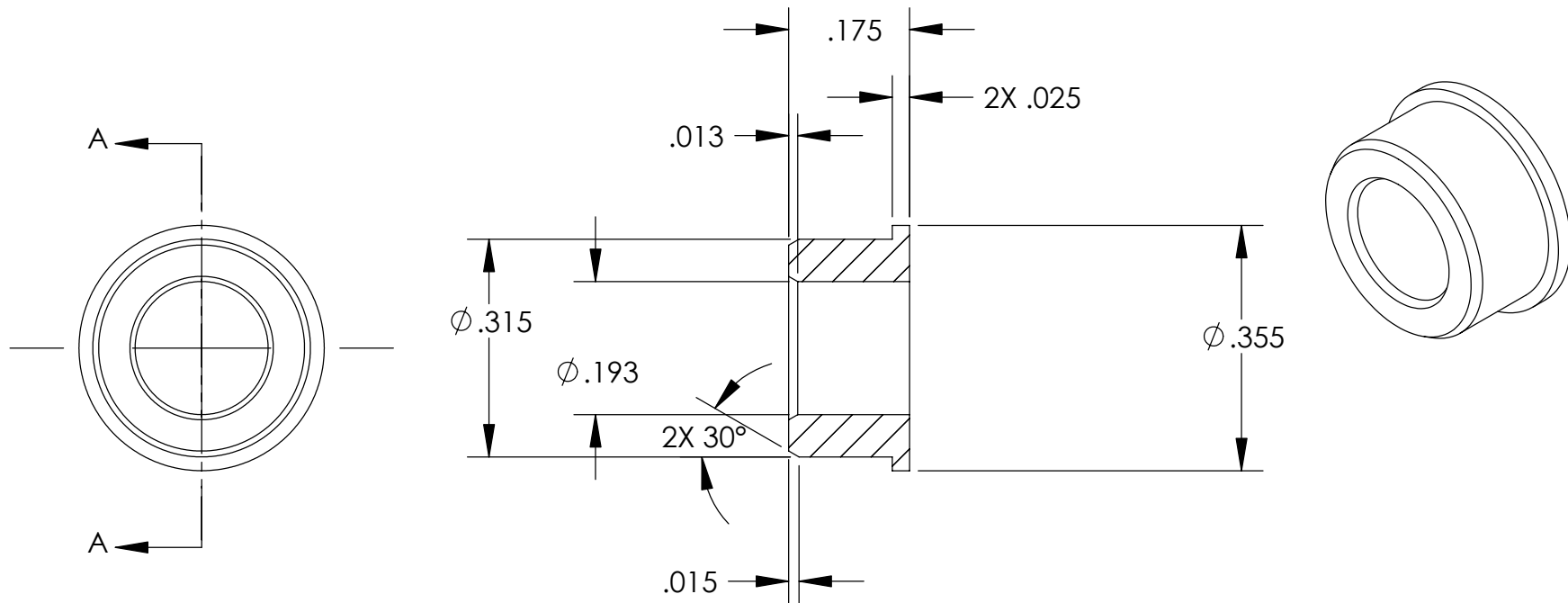


REVISIONS		
REV	DESCRIPTION	DATE
B	CHANGED WELD PREP FOR 3/16" TUBE	10/24/2003
C	REMOVED GROOVW	2/11/2004



SECTION A-A

NOTES:

1. .315 DIA TO FIT BORE OF P/N -113.
2. .193 DIA TO FIT OVER P/N -108.
3. MAKE FROM 3/8" X .125" W.T. TUBE.

UNLESS OTHERWISE SPECIFIED:		<div>High Precision Devices</div> <div>1668 Valtec Lane, Suite C, Boulder, Colorado 80301 Phone: (303) 447-2558 Fax: (303) 447-2548 Web Site: www.hpd-online.com</div>				
DIMENSIONS ARE IN INCHES DECIMAL TOLERANCES: .X ±.030 .XX ±.015 .XXX ±.005						
ANGULAR TOL: ± 1° SURFACE ROUGHNESS: 63/						
INTERNAL AND EXTERNAL SURFACE INTERSECTIONS SHALL BE UNIFORMLY FINISHED WITH CHAMFER .005/.010 X 45° OR RADIUS .005/.010. CHAMFER ALL THREADED HOLES 110° OF MAJOR DIAMETER X 45°		TITLE: p02101-111 flange, weld adapter				
		CONFIGURATION: 00-Default				
MATERIAL:	304 SST	SIZE	QTY PER ASSM: 1	SCALE: 4:1	SHEET 1 OF 1	REV
FINISH:	N/A	A	DATE: 5/20/2004	DRAWN BY: C. Danaher		C